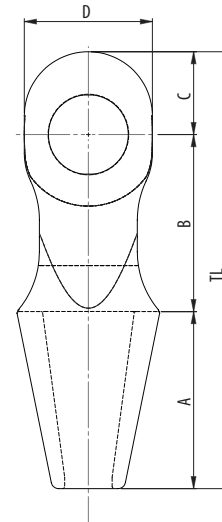
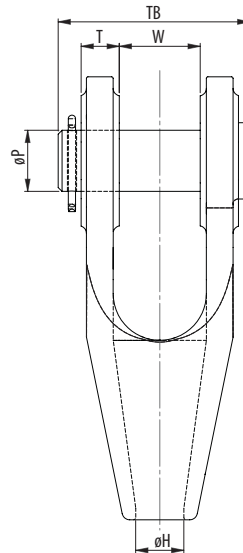


PORT INDUSTRY SOCKETS WITH PIN

QUENCHED AND TEMPERED CAST STEEL



Model Nr.	MBL (Mtons)	for wire ø (mm)	Dimensions (mm)										Weight (kg)
			A	B	C	D	øH	øP	T	TL	TB	W	
OSS G5 P	120	28-30	137	135	55	50	36	50,5	33	327	161	63	11
OSS G6 P *	150	31-34	155	150	60	110	42	55	37	365	180	70	15
OSS G7 P	170	35-38	176	170	70	120	47	60,5	41	416	195	80	22
OSS G8 P	225	39-43	198	190	80	135	52	70,5	46	468	230	90	28
OSS G9 P *	280	44-54	235	235	110	170	63	80	50	580	251	106	57
OSS G10 P	360	55-60	265	245	120	190	72	91	55	630	236	126	65

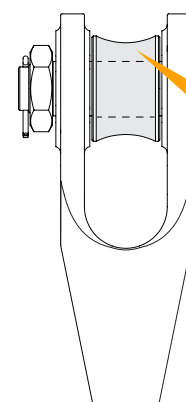
* AVAILABLE FROM STOCK

MBL = Minimum Breaking Load

- The standard finish of our sockets is blue. Hot dipped galvanized is also available.
- All sockets are provided with an EN 10204-2.1 declaration of conformity, EN 10204-3.1 material certificate and can be provided with a 2006/42/EC declaration where applicable.
- Dimensional tolerances depend on the manufacturing techniques applied and are different between machined components (pins) and cast components (socket bodies and wedges).
- Also surface finish e.g. hot dip galvanizing or even paint may add to the overall thickness and fork distance.
- Please contact Ropeblock for further guidance and a detailed dimensional tolerance sheet.



SEE OUR WARNING & SAFETY INFORMATION



Available with Roller